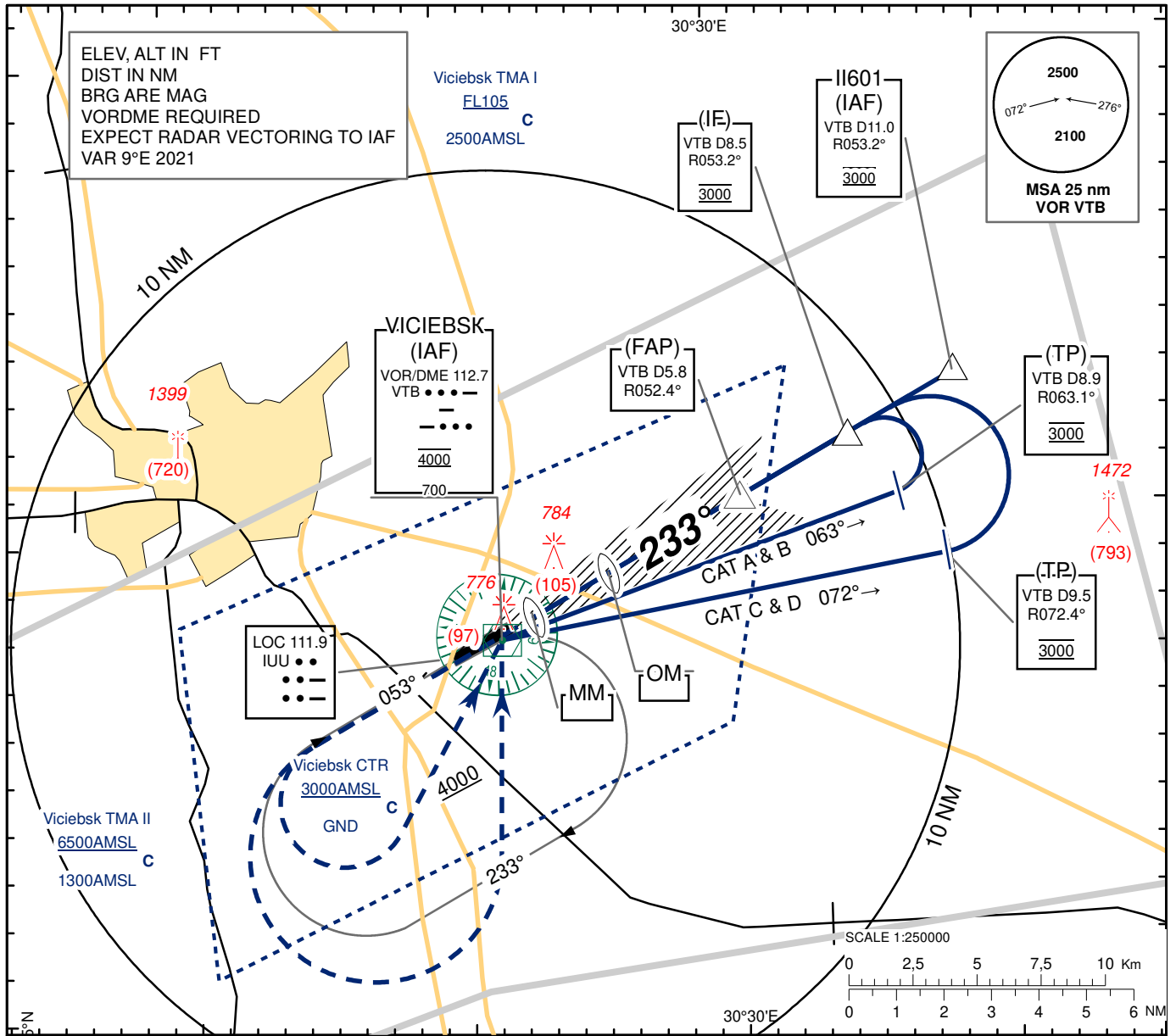


**INSTRUMENT
APPROACH
CHART - ICAO**

AERODROME ELEV 682
HEIGHTS RELATED TO
THR RWY 23 - ELEV 679

TWR 120.400
MET 119.425 (EN)
126.525 (RUS)

**VICIEBSK
ILS
RWY 23**



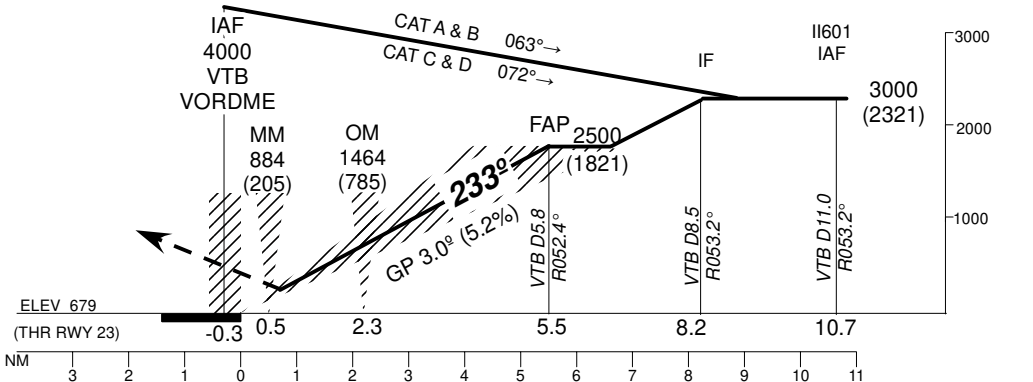
TRANSITION ALTITUDE: 6000

Alt set: hPa (mm on req)
QNH (QFE on req)

MISSED APPROACH

Climb on track 233°
to 1500 (821) or above,
turn LEFT to VOR (VTB)
climbing to 3000 (2321)
and follow ATC instructions.

ILS RDH 49 ELEV 679
(THR RWY 23)



CHANGE: Magnetic VAR.

Aircraft Category		A	B	C	D							
Straight-in Approach OCA(H)	ILS	907 (228)	919 (240)	927 (248)	938 (259)	VTB	6	5	4	3	2	1
						DIST THR	5.7	4.7	3.7	2.7	1.7	0.7
						ALTITUDE	2500	2170	1850	1530	1220	900
Circle - to - land		1150 (470)	1180 (500)	1320 (630)	1470 (790)	HEIGHT	(1821)	(1491)	(1171)	(851)	(541)	(221)
Timing not authorized for defining the MAPt												
		GS	Kts	80	100	120	140	160	180	200		
		Desc. Rate (5.2%)	ft/min	430	530	640	740	850	960	1060		

VICIEBSK
ILS
RWY 23

AERONAUTICAL DATA TABULATION

ILS approach to RWY23 from VTB VOR/DME, II601	
Fix/point	Coordinates
II601 (IAF) R 053.2° D11.0 VTB	551251N 0303832E
(IF) R 053.2° D8.5 VTB	551140N 0303435E
(FAP) R 052.4° D5.8 VTB	551027N 0303032E
(TP) R063.1° D8.9 VTB (Vmax 140Kt 3.5MIN)	551023N 0303622E
(TP) R072.4° D9.5 VTB (Vmax 210Kt 2.5MIN)	550904N 0303802E
(IAF) VTB VOR/DME	550740.4N 0302135.8E
IUU LOC	550706.6N 0301926.0E
OM	550858.7N 0302537.6E
MM	550807.9N 0302248.9E
THR RWY 23	550754.37N 0302203.81E